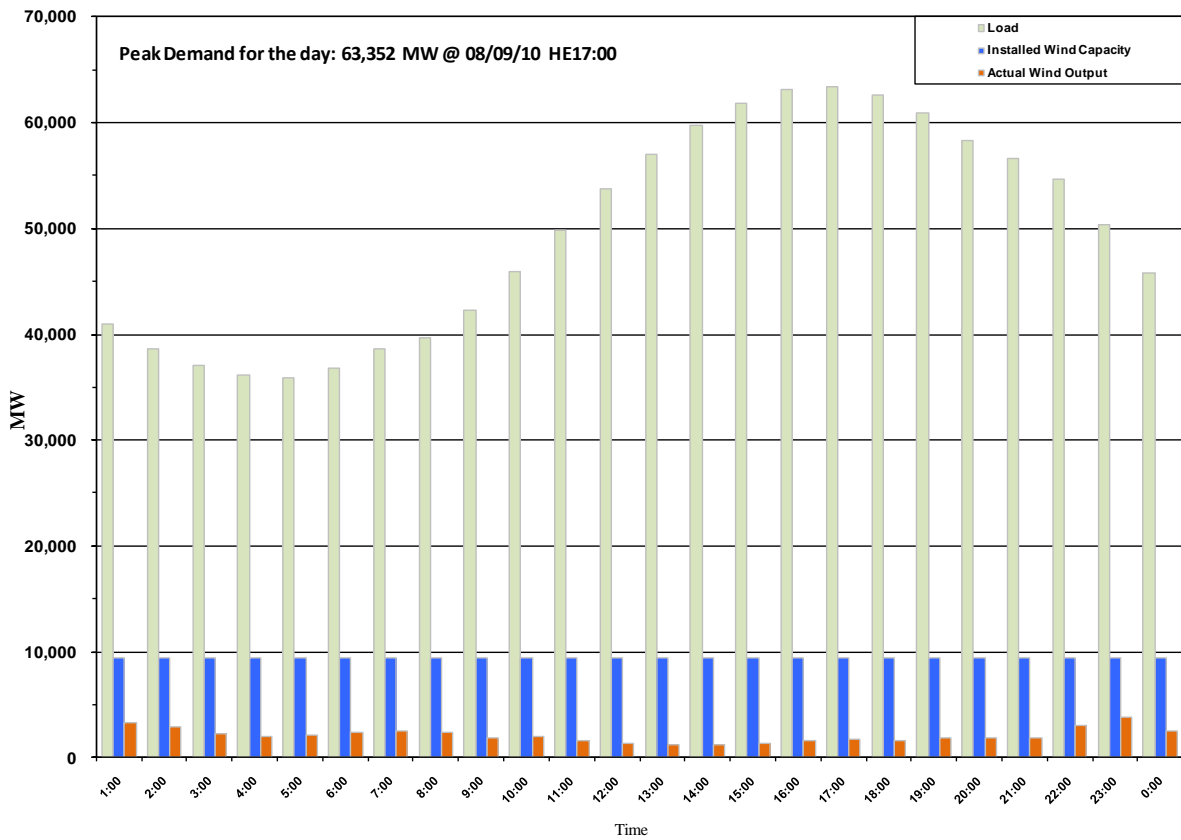




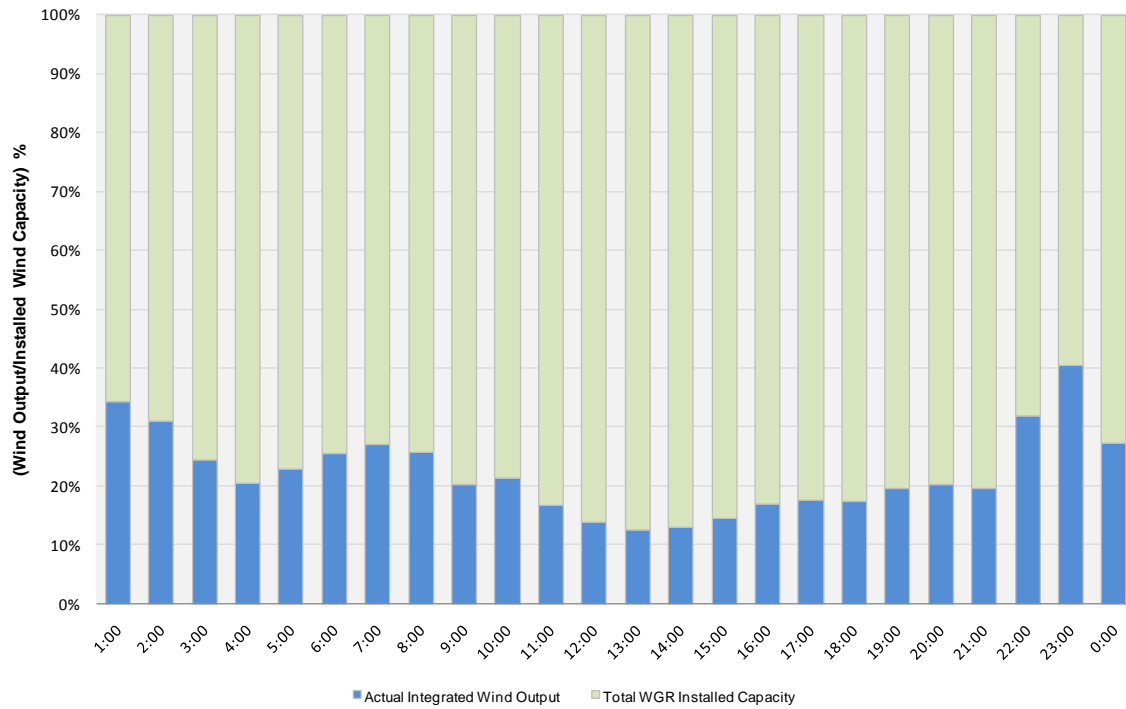
ERCOT Grid Operations Wind Penetration Report: 08/09/10

Peak Load **63,467 MW**
Load Peak Hour **17**
Wind Record 06/12/10 **7016 MW**
Max Wind value **4062 MW**
Wind Peak Hour **22:24:24**
Wind Penetration % **7.98**

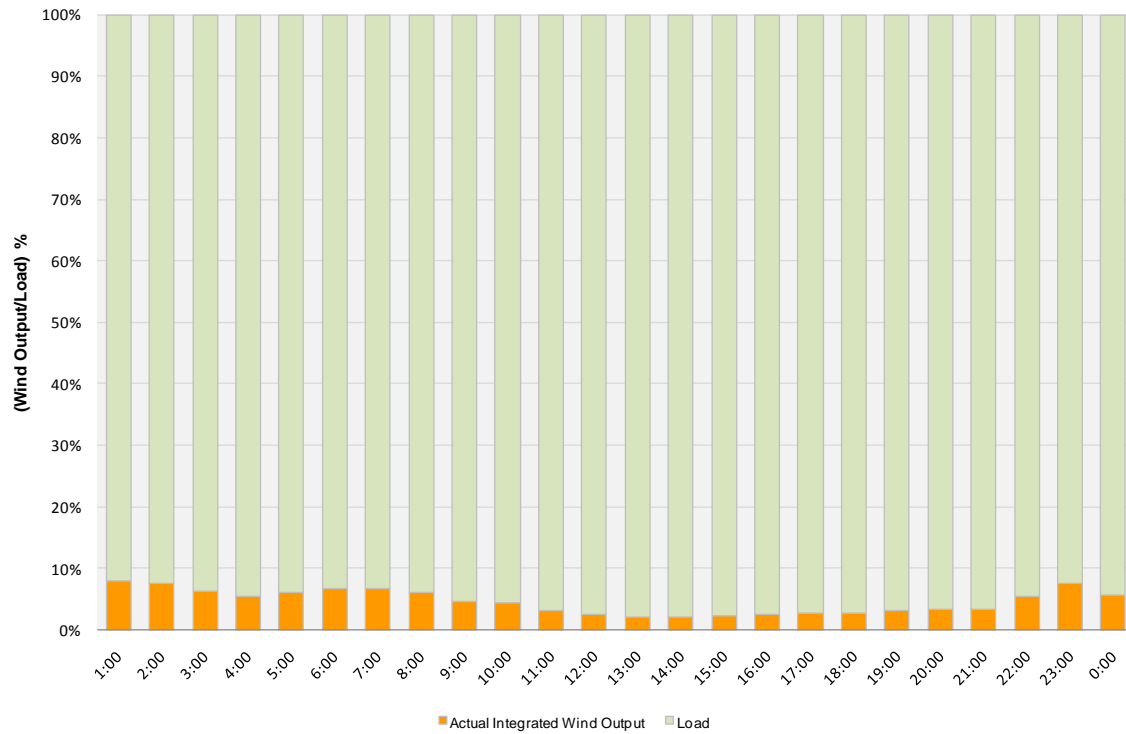




Actual Wind Output as a Percentage of the Total Installed Wind Capacity 08/09/2010



Actual Wind Output as a Percentage of the ERCOT Load 08/09/2010





ERCOT Load vs. Actual Wind Output 08/02/10 - 08/09/10

